



Welcome,

We're glad you decided to try one of our products. If there is anything you think we could do better, please feel free to contact us. *Dominion* is our second in a line of products we call our "*InterSoft Series*". Each product will look and feel as smooth as this one, so keep an eye open for each of them. And remember if you register any of these products you get the rest for free. Thanks again for taking the time to review our products.

Sincerely,
Sheldon D. Densmore
C.E.O. **WinGames.Inc**



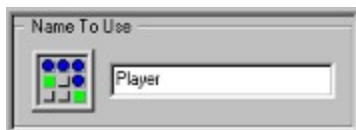
Match Play



Starting A Match

To start a new match, from the 'Game' menu, click on the 'Match' menu item or click the toolbar button. This will display the Match Play dialog box.

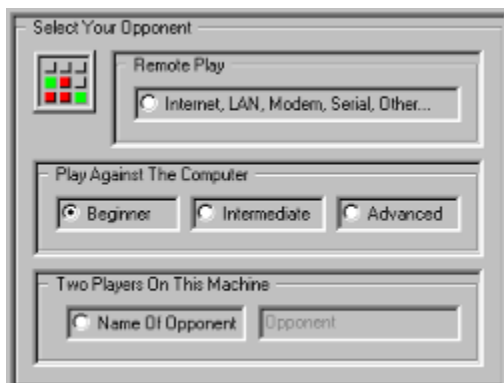
First, enter a name you would like to be called by (the default is Player). This is the same name that will appear on the Score Card, and is also the default session name used for any remote matches you play.



Next, select the type of match you would like to play. There are two different kinds of matches. Each one is different and presents a different challenge. Points matches continue until one player reaches the points specified. The 'Best Of' matches are for playing games series like 4 out of 7, or 3 out of 5.



Then select your opponent. Selecting 'Remote Play' will start the sequence for connecting to an opponent when you actually start the match. To play against the computer click any of the skill levels. Select 'Two Players On This Machine' to play with two people on the this computer. When you select 'Two Players On This Machine' you can enter your opponents name.



Now you are ready to start your match. Press the 'Start New Match' button and the fun begins. There is no end to a match. Match play continues until you start a new match. To end a remote match that you are connected to, select a different opponent or click on the 'Remote Play' box.



Playing A Match

Once you've started a new match, match play continues until you either quit playing or start a new match. At the end of every game the Score Card appears and displays the current match results. When someone wins a match, the Score Card starts a new match, while retaining the match win totals.

Opening A Match

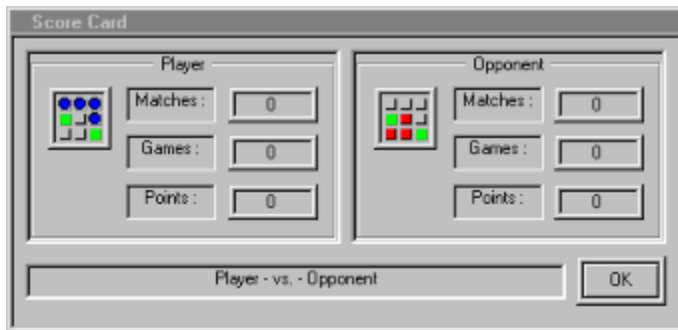
To open a match, from the 'Game' menu, click on the 'Open' menu item or click the toolbar button. The match will be loaded right at the point you saved it at. If it is a remote match and you are connected it will be also be loaded on your opponent's computer also, so you can start right from there.

Saving A Match

To save a match, from the 'Game' menu, click on the 'Save' menu item or click the toolbar button. The match will be saved at the point you are at.

Score Card

The Score Card keeps track of the games progress. It is displayed after each game. To view the score card, from the 'View' menu, click on the 'Score Card' menu item or click the toolbar button.





Game Play



Starting A Game

To start a new game from the 'Game' menu, click on the 'New' menu item or click the toolbar button. You can also play the same game again by selecting 'Again' from the same menu.

Rules Of Dominion

Object

The object of the game is to have the most pieces on the board when the game ends. A game ends when,

1. Either player has no more moves.
2. At the beginning of a players move, they starts a new game, thus stopping the game.

Play

Players take turns selecting a piece to move and then moving it. There are only two legal moves you can make.

The first is to move onto an adjacent square. When you make this type of move you are rewarded with an extra piece being left behind.

The second type of move is to move two squares away. When you do this, the piece you selected is moved and no piece is left behind.

Capturing

You capture by moving a piece. When you make a move, any surrounding pieces that are your opponents are captured and turned into your pieces.



Backwards A Move

To move backward a move, from the 'Options' menu, click on the 'Backwards A Move' menu item or click the toolbar button. If you are playing against the computer and move backward into computer moves, start play again by clicking on one of the computers pieces. If you are remotely connected and you move backward it is reflected on your opponent's board, but remember if you go to far back it will be your opponents move again.



Forward A Move

To move forward after you have moved backwards, , from the 'Options' menu, click on the 'Forward A Move' menu item or click the toolbar button.

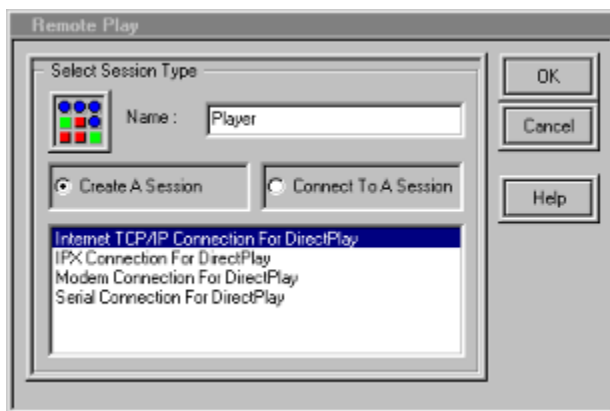


Remote Play

Important Note: Dominion requires Microsofts DirectX / Direct Play support for all remote sessions. If you don't have it loaded on your machine you can download from them or us at no charge. It provides all the underlying transport support.

Starting A Remote Match

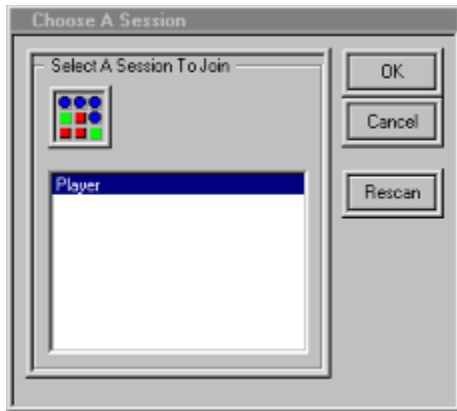
To start a remote match, from the 'Game' menu, click on the 'Match' menu item or click the toolbar button. Then select 'Remote Play' as your opponent, and click the 'Start New Match' button. The remote play dialog box will appear. If the list box has no selections in it, then you need to load Microsofts DirectX / Direct Play.



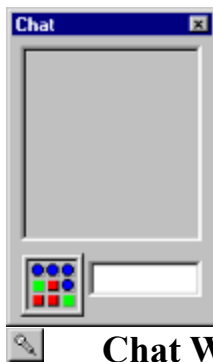
One player then creates a session and waits for the other player to connect to that session. If you create the session your computer waits for a connection. If you are connecting to a session, depending on the type session, you will be asked different types of connection questions.

Important Note: For Internet play you should connect to your service provider before starting a remote session. Once connected to your provider, you need to get the IP address you are at so you can tell your opponent what address to connect to. You can see what address you are connected as by running the "WinIPcfg.exe" utility found in your windows directory. Give this IP Address to your opponent so that they can use it to connect to you. This address changes each time you connect to your service provider.

If you are connecting to a session, when a session is found the following Dialog box will appear. Select the session you want and click the Ok button. If no sessions are found it still appears but with no choices. At that point you can rescan using the rescan button.



Once you are connected to a session, your ‘Chat Window’ will appear. If for some reason you get disconnected or just quit playing by starting a new match, the ‘Chat Window’ will disappear.



Chat Window

This window allows you to talk to your opponent while you are connected. Type your message and hit the return key. You can toggle this window on and off even if you are not connected. To do this, from the ‘View’ menu, click on the ‘Chat Window’ menu item or click the toolbar button.

Ending A Remote Match

To end a remote match and disconnect from an opponent, from the ‘Game’ menu, click on the ‘Match’ menu item or click the toolbar button. Then select ‘Remote Play’ as your opponent. This will prompt you to disconnect from the remote session you are in.



Other Features



Sound

To toggle sound on and off, from the 'Options' menu, click on the 'Sound' menu item or click the toolbar button.



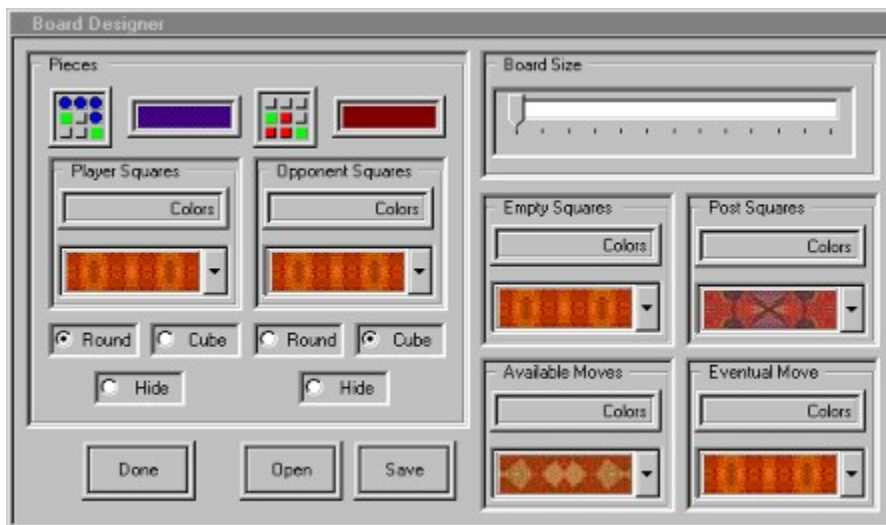
Music

To toggle music on and off, from the 'Options' menu, click on the 'Music' menu item or click the toolbar button. There are seven MIDI selections included. They play in a randomly started, curricular pattern. If you want to replace any of them with your own MIDI selections, they are named Music1.mid - Music7.mid, and are in the installation directory of this product.



Board Designer

Use the board designer to design any type board you like. There are 24 different materials to choose from along with every color your computer supports. When you choose a different layout it is stored until you change it again. You can also open or save a particular layout you like.



Register **Dominion** now for only \$10.00 and get all our other
Award Winning Products.

By phone with a credit card call (972) 612-0839, 7 days a week , 24 hours a day.

By email, complete Order Form below and send to: wingames@wingames.com

By mail, complete Order Form and send with check or money order (in US funds) to:

WinGames.Inc
3905 Sandia
Plano, TX 75023 USA

Windows '95 Collection - Our best games on one CD. Includes Game Chest, BIG 8 Solitaire, Botz, Penny's Arcade and Total Recall. A real value with over 15 fully enabled games.

Super Shareware Game Collection - For those who wish to "try before they buy", the shareware versions of all games listed below on one CD.

Pro Backgammon - Another 'InterSoft' game. This award winning version of Backgammon has 5 levels of match play, 3 levels of computer play, Remote play over the Internet, Modem, Lan, or Serial connection along with sound and music.

Big 8 Solitaire - Eight of the greatest solitaire games of all time with full computer play. Includes Auld Lang Syne, Canfield, Flower Garden, Grannies Clock, Klondike, Little Spider, Magic Carpet and Osmosis.

Game Chest - A challenging collection of games including Backgammon, Yatze, and Rummy to be played with two players or against the computer. Two versions of mind numbing Solitaire as well, Queen's Audience and Fortune's Favor.

Total Recall - Follow the sights and sounds without being dazzled. A quick paced game to challenge your memory and reaction time. Not a simple simon. Truly addicting.

Penny's Arcade - Try your hand at a shooting gallery with a full range of skill levels and configuration options. For one to four players, a carnival of prize winning fun.

Botz - Enter the Gardens of Zardonia and battle the Botz. Over 60,000 exciting gardens, with rendered graphics and arcade style sound.

Board Games for 2 - Chess, Checkers, Backgammon, Goban, Pipes, Race Chase, Flag Ship and Fox & Hounds. Play with a friend on the same machine, on any network or using a modem. (available in 3 1/2" diskette and email formats only)

Solitary Confinement - Eight solitaire games which require a full range of skill, knowledge and lady luck. Fortune's Favor, Accordion, Beleaguered Castle, Calculation, Quadrille, Four Season's, Queen's Audience and Chameleon. (available in 3 1/2" diskette and email formats only)

Order Form _____

Enter registration code from your Shareware Notice Screen Here: _____

Name: _____

Mailing Address _____

Email address _____

Credit Card: MC: __ Visa: __

Credit Card Number: ____ - ____ - ____ - ____

Credit Card Expiration Date: [MM/YY]: ____ / ____

Quantity, Description and Format Preference: _____

Visit our website at <http://www.wingames.com/wingames>

WinGames.Inc

